

CL1 Series Camera Link Industrial Line Scan Camera



Product Features

- CameraLink interface, capable of providing a theoretical maximum bandwidth of 6.8 Gbps.
- Supports Base, Medium, Full, and Deca output modes.
- Supports wide voltage power supply of DC 12~24V.
- Supports various trigger modes including external trigger and free-run.
- Supports ISP functions such as gamma correction, LUT, and flat field correction.
- Compatible with Camera Link protocol and GenICam standard.

Product model and parameters

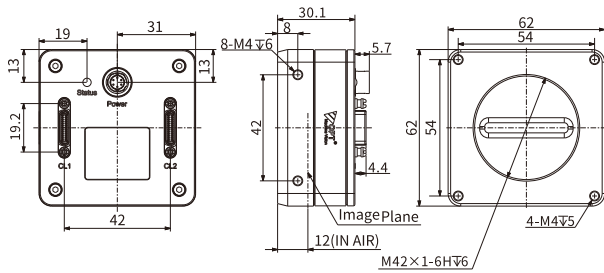
Camera Model	OPT-CL1-M4-L3-03	OPT-CL1-M8-L3-01	OPT-CL1-M16-L3-01
Sensor Type	Global Shutter CMOS		
Image Format	Mono8/10/12		Mono8/10
Signal-to-Noise Ratio (SNR)	43.9dB	40dB	37.4dB
Number of Channels	2/4/8/10Taps		
Pixel Clock	40MHZ,60MHZ,70MHZ,80MHZ,85MHZ		
Region of Interest (ROI)	Supports		
Binning	Supports		
Mirroring	Supports horizontal mirroring		
Gain	1.25/1.75/2/3/4	1 ~ 15.5	
Gamma	0~3,999		
Exposure Control	Time Setting		
Image Acquisition Mode	External Trigger/Free Run		
Power Interface	Hirose 6pin(Male)		
Power Specifications	DC12V□24V(+10%) 1A		
Data Interface	CameraLink(SDR)		
Specifications	Compliant with GigE Vision 2.1,GenICam		
Temperature	Storage temperature: -30°C~+80°C; operating temperature: 0°C~+50°C		

Product model and parameters

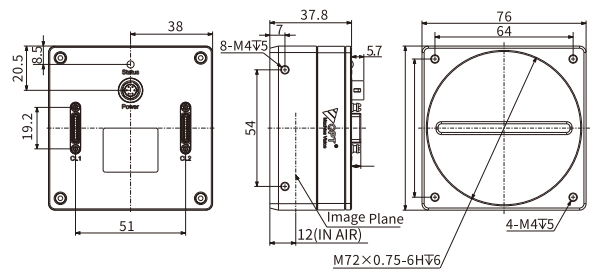
Model	Resolution	Pixel Size (μm ²)	Chip Type	Line Frequency (KHz)	Optical Interface	Exposure Time	Product Dimensions (mm)	Power Consumption	Black and White/Color
OPT-CL1-M4-L3-03	4096×1	7.0×7.0	CMOS	200	M42×1.0	1us-100ms	62.0×62.0×30.1	7.0W@24V	M
OPT-CL1-M8-L3-01	8192×1	7.0×7.0	CMOS	100	M72×0.75	1us-100ms	76.0×76.0×37.8	8.0W@24V	M
OPT-CL1-M16-L3-01	16384×1	3.5×3.5	CMOS	50	M72×0.75	1us-100ms	76.0×76.0×37.8	8.0W@24V	M

Dimensions (mm)

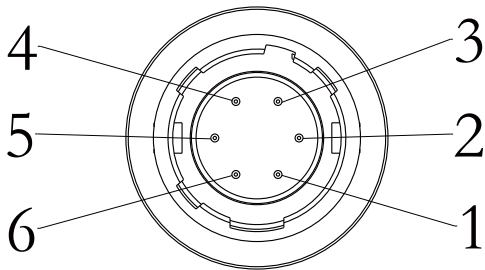
OPT-CL1-M4-L3-03



OPT-CL1-M8-L3-01/OPT-CL1-M16-L3-01




IO Interface Description



Pinouts	Signal	Explanation
1	Power	DC12V ~ 24V Camera Power Supply
2	Power	DC12V ~ 24V Camera Power Supply
3	Power	DC12V ~ 24V Camera Power Supply
4	GND	Power Ground GND
5	GND	Power Ground GND
6	GND	Power Ground GND

Accessories

Camera Link Camera Universal Capture Card

Model	OPT-G1L-J2-BP-04
Camera Link Mode	Base,DualBase,Medium,Full,Full+(80bit)
Bus Interface	4×PCIe 2.0
Physical Interface	2×SDR
Transfer Speed	6.8 Gbps
OS Support	Windows 7/Windows 10/Windows 11
Appearance Illustration	

Camera Link Camera Universal Cable

Cable Type		6-pin IO Cable with Power Adapter	12-pin IO Cable	Capture Card IO Cable	
Cable Material/ Length	Static	3M	CB-HR10-6F008-S3M	/	CB-DB-15F004-S3M
		5M	CB-HR10-6F008-S5M	/	CB-DB-15F004-S5M
		10M	CB-HR10-6F008-S10M	/	/
	High Flexibility	3M	CB-HR10-6F008-R3M	/	/
		5M	CB-HR10-6F008-R5M	CB-CL-SS-T5M	/
		10M	CB-HR10-6F008-R10M	CB-CL-SS-T10M	/
Appearance Illustration					